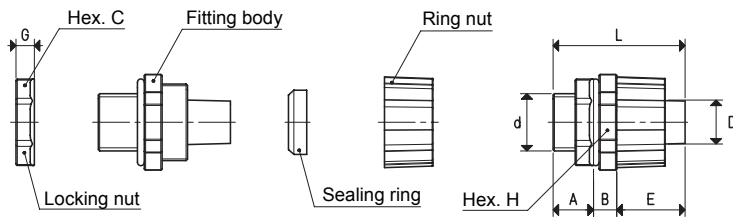


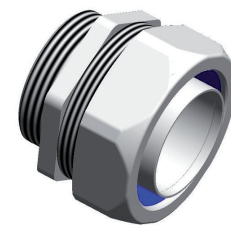
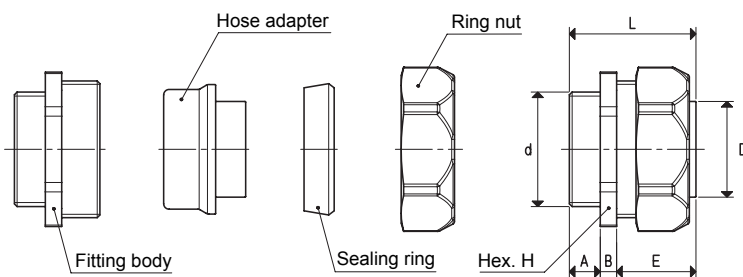
TPR FLEXIBLE HOSE FITTINGS



RTPR FITTINGS

Art.	d Ø	A	B	C	D Ø	E	G	H	L	Material	Colour	Weight g
RTPR 3/8"	G3/8"	14.5	8.5	26	12.0	23.5	6	28	46.5	polypropylene	grey	12
RTPR 1/2"	G1/2"	14.5	9.0	28	15.5	26.5	7	33	50.0	polypropylene	grey	18
RTPR 3/4"	G3/4"	14.0	10.5	35	20.8	26.5	9	38	51.0	polypropylene	grey	26
RTPR 1"	G1"	16.0	9.0	41	26.5	32.5	10	44	57.5	polypropylene	grey	36

Operating temperature: -10° / +60 °C



RTPR FITTINGS

Art.	d Ø	A	B	D Ø	E	H	L	Material	Weight g
RTPR 1" 1/4	G1" 1/4	11	6	34.5	28.5	52	45.5	nickel-plated brass	340
RTPR 1" 1/2	G1" 1/2	14	7	39.5	34.0	60	55.0	nickel-plated brass	530
RTPR 2"	G2"	14	7	50.0	33.0	74	54.0	nickel-plated brass	596

Operating temperature: -20° / +60 °C

3D drawings available at www.vuototecnica.net

6.06

Conversion ratio: inch = $\frac{\text{mm}}{25.4}$, pounds = $\frac{\text{g}}{453.6}$ = $\frac{\text{Kg}}{0.4536}$

GAS-NPT thread adapters available at page 1.117