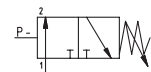
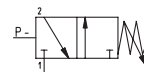
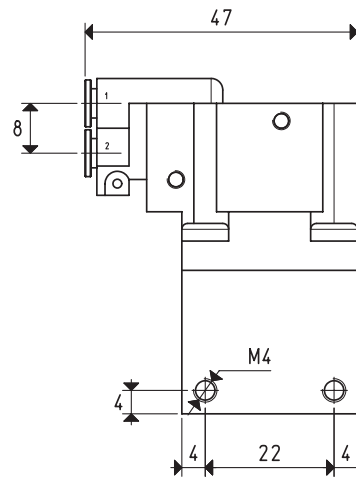
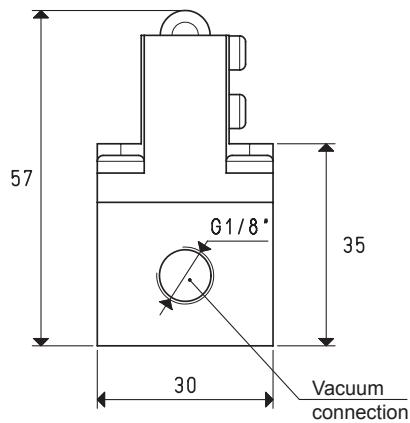
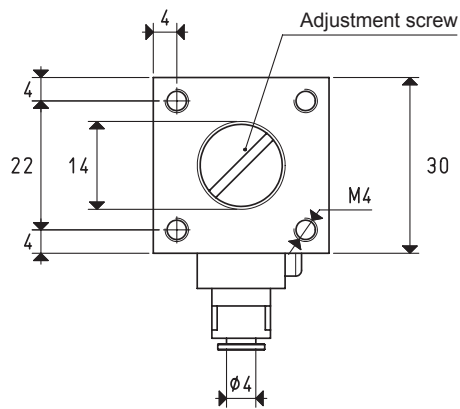


MINI PNEUMATIC VACUUM SWITCH

These vacuum switches feature reduced overall dimensions and, according to the model, they give or remove a pneumatic signal when a certain adjustable vacuum level is reached. The pressure differential between the set maximum value and the value of reset of the rest signal is not adjustable. They are particularly suited for controlling vacuum generators and for activating pneumatic valves.



3D drawings available at www.vuototecnica.net

| Art. | | 12 01 30 | 12 02 30 |
|-------------------------------------------|-----------|-----------|-----------|
| Adjustment range | mbar abs. | 930 ÷ 50 | 900 ÷ 40 |
| Fixed differential | mbar | 70 | 100 |
| Repeatability | mbar | ±5 | ±5 |
| Idle signal | | NC | NO |
| Supply pressure | bar (g) | 2 ÷ 8 | 2 ÷ 8 |
| Pneumatic microvalve | art. | 00 12 17 | 00 12 18 |
| Max. capacity of the 6 bar (g) microvalve | NI / s | 1.2 | 1.2 |
| Working temperature | °C | -10 ÷ +60 | -10 ÷ +60 |
| Weight | g | 104 | 102 |

3.06

Conversion ratio: inch = $\frac{\text{mm}}{25.4}$; pounds = $\frac{\text{g}}{453.6} = \frac{\text{Kg}}{0.4536}$

GAS-NPT thread adapters available at page 1.117