

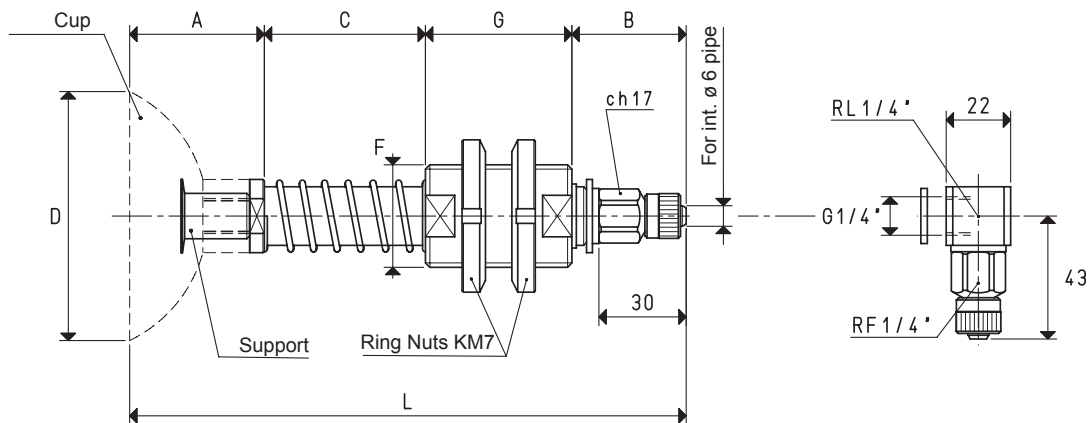
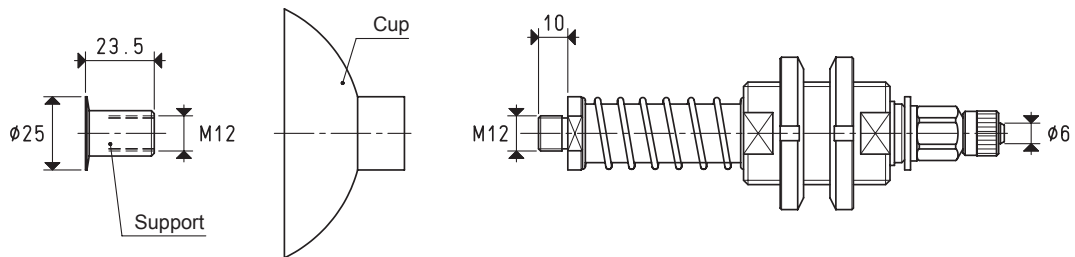
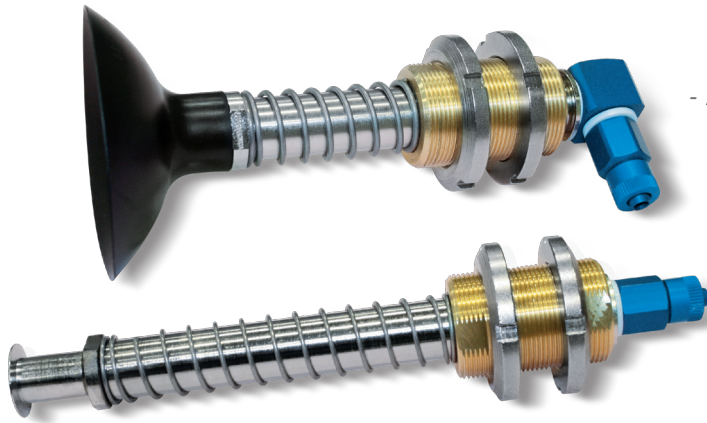
## SPECIAL CUP HOLDERS

These special cup holders have been designed to lift and handle heavy loads and to withstand intensive and continuous workloads in dusty or damp environments. They are composed of:

- A chromed steel stem for fastening the cup.
- A brass threaded support with self-lubricating bushes, equipped with two ring nuts for fastening the cup holder to the machine.
- A spring to cushion the impact of the cup with the load to be lifted.
- A quick coupler for connection to the suction hose.

The actual springing stroke is:

- For height C= 55 mm 37 mm
- For height C= 110 mm 84 mm



VERSION 06 85 10

VERSION 06 85 10 L

### CUP HOLDERS WITH STRAIGHT QUICK COUPLER FOR PLASTIC HOSE Ø 6 X 8

Art.	Force Kg	A	B	*C	D Ø	F Ø	G	L	Cup art.	Support included art.	C = 110 mm	
											Weight g	Weight g
06 85 10	14.18	46	39	55	85	M35 x 1.5	50	190	01 85 10	00 08 29	731.9	853.9

**Note:** Cups are not an integral part of the cup holders, therefore, they must be ordered separately.  
Add the letter L to the code to order L-type fittings.

\* Also available with height C of 110 mm

Conversion ratio: inch =  $\frac{\text{mm}}{25.4}$ ; pounds =  $\frac{\text{g}}{453.6}$ ; Kg =  $\frac{\text{g}}{0.4536}$

3D drawings available at [www.vuototecnica.net](http://www.vuototecnica.net)

2.103