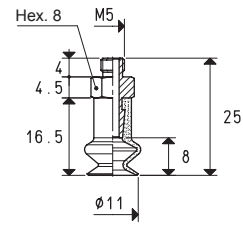
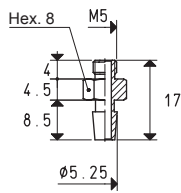
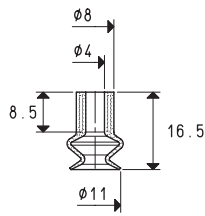
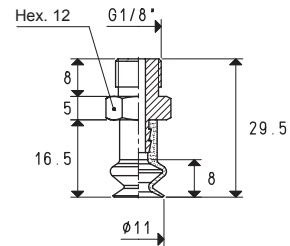
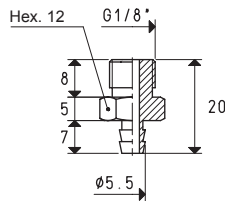
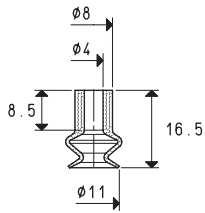


# SPECIAL BELLOW CUPS WITH SUPPORTS



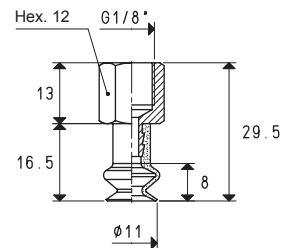
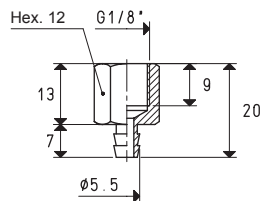
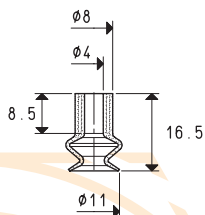
Cup Art.	Force Kg	Support Art.	Support material	Weight g	Cup with support Art.	Weight g
01 11 16 *	0.23	00 08 06	brass	2.6	08 11 16 *	3.3

\* Complete the code indicating the compound: A= oil-resistant rubber; N= natural para rubber; S= silicon



Cup Art.	Force Kg	Support Art.	Support material	Weight g	Cup with support Art.	Weight g
01 11 16 *	0.23	00 08 03	brass	9.0	08 11 17 *	9.7

\* Complete the code indicating the compound: A= oil-resistant rubber; N= natural para rubber; S= silicon



Cup Art.	Force Kg	Support Art.	Support material	Weight g	Cup with support Art.	Weight g
01 11 16 *	0.23	00 08 04	brass	8.1	08 11 17 F *	8.8

\* Complete the code indicating the compound: A= oil-resistant rubber; N= natural para rubber; S= silicon

3D drawings available at [www.vuototecnica.net](http://www.vuototecnica.net)

1.76

Conversion ratio:  $\text{inch} = \frac{\text{mm}}{25.4}$ ;  $\text{pounds} = \frac{\text{g}}{453.6} = \frac{\text{Kg}}{0.4536}$

GAS - NPT thread adapters available at page 1.117